



Banquette Seating

South West Upholstery is one of the UK's leading manufacturers of bespoke banquette seating, specialising in custom-made solutions for restaurants, pubs, clubs, and kitchens. Each piece is made to order, tailored to your exact specifications, and available in a wide range of styles and dimensions to perfectly suit your space.



Why Choose Banquette Seating?



Glove Factory Studio - Bradford-on-Avon

**We believe
banquette seating
to be a practical
yet impressive
solution to elevate
your interiors
without having to
compromise on
space.**

**The proof is in the
pudding, our recent
projects showcase
the beauty of this
upholstery.**



“We believe banquette seating offers a practical yet sophisticated solution for enhancing interior spaces without compromising on functionality or floor space. Our recent projects highlight the exceptional craftsmanship and aesthetic appeal that bespoke upholstery can bring to any environment.”

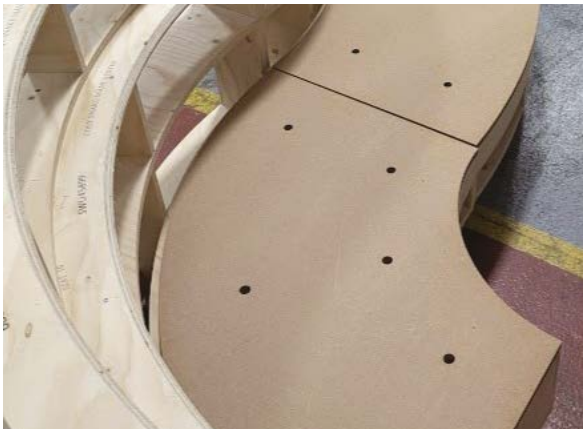
Paul Castle, Flourish



Choosing Your Banquette

FRAME

Choose from our standard sizes for a straightforward solution, or take it a step further and create something completely bespoke to suit your space.



A Smarter Build for Banquette Seating

Our process sets us apart; each piece of seating is CNC-made for precision and consistency. This approach allows us to manufacture offsite and deliver fully assembled, ready-to-install banquette seating, minimising disruption and saving valuable time onsite.

Our robust frameworks are constructed using 18mm plywood and MDF, making them strong enough to be used as freestanding units. Both the base and back cushions are mounted on MDF boards, which can be easily removed. This design makes future repairs or upholstery updates straightforward, helping extend the life of your seating with minimal hassle.

STYLE

From plain finishes to fluted or buttoned designs, we offer styles to suit every taste and interior.



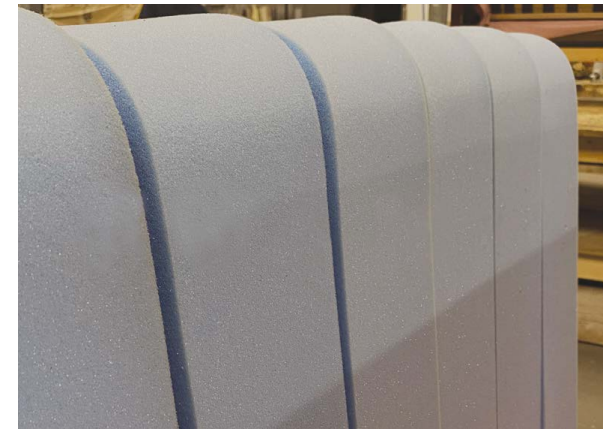
Endless Style Possibilities

Banquette seating offers a limitless range of design options. Once you've selected your preferred frame method, you can choose from a variety of upholstery finishes whether plain, fluted, buttoned or bespoke.

From there, customise your seating with a wide selection of colours, materials, kickplates, and leg styles to create a look that's uniquely yours.

FOAM

What's your preferred level of comfort? We offer a range of foam options to suit your specific needs and preferences.



Built to Last Tailored to You

We recommend our standard foam and material combination for a durable, high-quality finish that stands up to heavy use.

However, if you prefer a softer feel, we also offer alternative options to create the perfect seating solution for your comfort and space requirements.



Bespoke Items

If our standard designs don't quite suit your needs, we're happy to work with you to create something truly bespoke and unique. Whether it's a private domestic project or a larger-scale collaboration with designers, we're always open to new ideas and excited to help bring your vision to life.

Our team, led by experienced upholstery experts, will guide you through the design and functionality options to ensure the final product meets your expectations in both form and function.

Please note that bespoke projects do incur additional costs due to the custom design and manufacturing process involved. However, the result is a tailored piece, designed just for you crafted by us.



Cosy Club - Reading



The Bird in Hand - Saltford



The Design Museum - London



Banquette Styles

With the expertise of our in-house design team, we offer seating solutions based on our standard sizing, generously proportioned to ensure comfort in both dining and casual settings. These standard sizes are suitable for domestic and commercial environments and can be tailored to meet your specific requirements. We offer a wide range of styles, all customisable in countless material options, ensuring each piece reflects your unique vision. The styles showcased here represent our core sizing, but adjustments can easily be made for a truly bespoke design.

Plain



Button Back



Fluted



Roll Back



Bespoke



Get In Touch

Our expert team can guide you through all banquette style options.

sales@swupholstery.co.uk



Style Guide: Banquette Seating

Banquette seating offers a space saving, stylish solution ideal for both commercial and residential settings. Whether you're furnishing a restaurant, café, office breakout area, or a cosy dining area at home, our banquettes are designed for both comfort and impact. Explore our most popular styles below, all fully customisable in size, fabric, and finish. Let us help you create seating that's not only functional but reflects your brand, style, and the way people use the space.

Plain: Simple & Timeless



You cannot go wrong with this one, whether you're working with a loud interior space or just prefer something simple. This look works great and represents the less is more approach!

Roll Back: Elegant & Refined



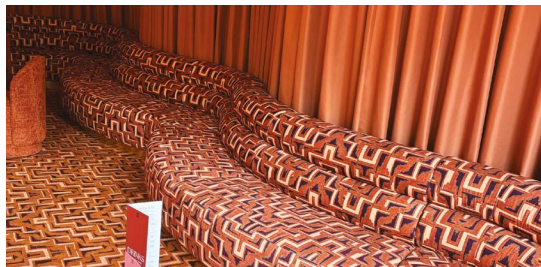
Featuring a gently curved upper backrest, this style offers a refined silhouette that adds character to any space—whether it's a chic restaurant, a boutique hotel, or a sophisticated home dining area.

Fluted: Sleek & Modern



A popular choice to give your seating that extra something. Flutes can look smart in a range of environments. Tip: It also looks great when contrasting fabrics between base and back flutes!

Bespoke: Unique & Contemporary



Make a statement with banquette seating that's crafted just for you. Our bespoke banquettes blend tailored design with standout style, offering a seamless balance of form, function, and comfort.

Button Back: Classic & Elevating



Button back finish is a lovely look and is a great way to show off the upholstery. It takes a plain fabric and creates a beautiful finish.



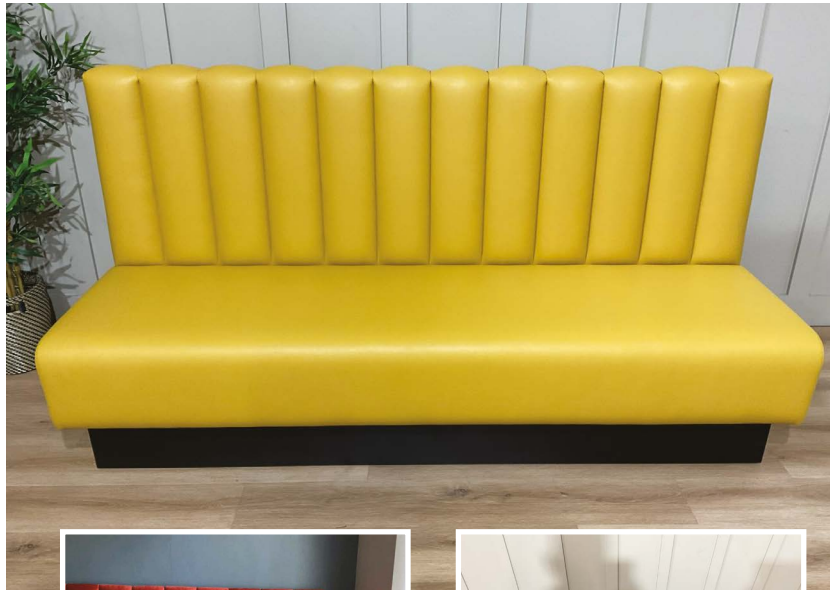
Visit us on Instagram

Visit our Instagram and view more examples of our banquette seating.

@swupholstery

Kickplate Options

Kickplates offer a sleek and durable finish to your banquette or booth seating, enhancing both style and practicality. We offer kickplates as standard in oak or matt black, providing two versatile looks that complement a wide range of interiors. Looking for something more personalised? We also offer MDF kickplates cut to size, ready for you to paint in any colour of your choice, perfect for matching brand palettes or adding a pop of personality. Whether you're going for bold contrast or subtle coordination, our kickplate options help you complete the look, your way.



Inset 1: Banquette Showing Plug Sockets



Inset 2: Lift Up Seat Pads



**MFC BONDED
WITH EGGER
-H3170 NATURAL
KENDAL OAK ST12**



**MFC BONDED
WITH EGGER
-U999 BLACK ST2**



**RAW MDF BOARD
- WITH OTHER TO
PAINT**

Fully Customisable

Each piece is made to order, giving you full control over every detail, from shape, size, and style to materials and finishes. Need more than just a beautiful seat? We can incorporate hidden storage, lift-up seat pads, integrated plug sockets, and other smart features to suit modern living or high-traffic commercial use.

Egger

Fully customisable with large array of finish and colour options.



Leg Options



**Wendolene -
Raw (fully customisable)**



**Wendolene -
Medium Brown**



**Wendolene -
Tudor Oak**



**Wendolene -
Jacobian**

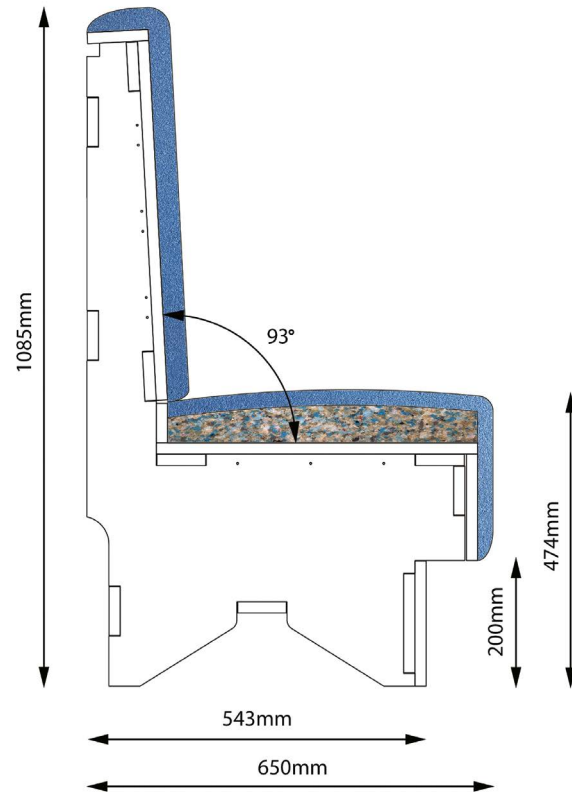


****Please note:** colours can vary slightly depending on the grain pattern of the wood**

Foam Options

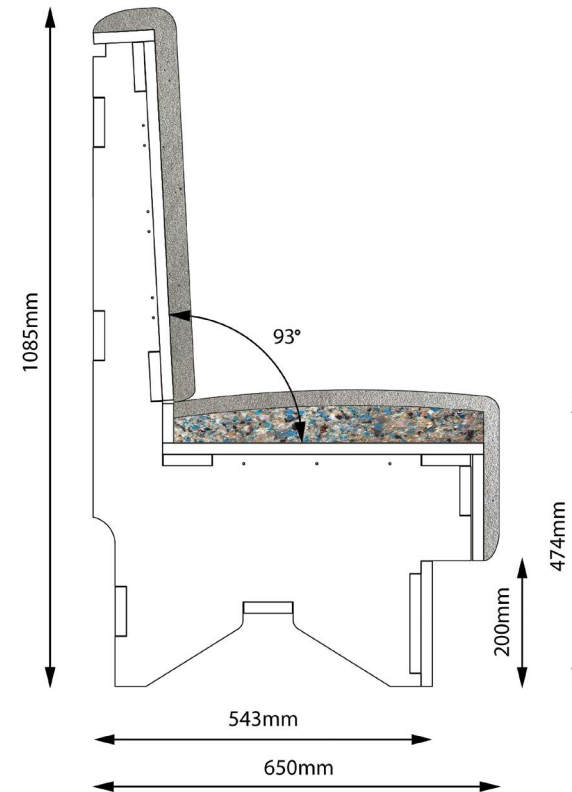
Standard Foams

Our preferred foam combination features a slight pitch in the base, creating a more refined and luxurious seat profile. This subtle shaping not only enhances comfort but also adds a premium feel to the overall design. Built with generous, firm, high-quality foam, this model is particularly well-suited for commercial settings and high-use environments. The durable construction ensures long-term performance without compromising on comfort, making it a reliable and stylish choice for any seating area.



Softer Foams

Building on our tried-and-tested design, this foam combination offers a softer, more relaxed seating experience. Designed to let you gently sink into the seat, it evokes the comfort of a sofa-style feel, making it an ideal choice for casual environments and laid-back lounge areas. The softer profile encourages longer stays and a more inviting atmosphere, perfect for spaces where comfort is key.



Delivery & Installation



Peace of Mind on Every Installation

Before any project begins, we carry out comprehensive risk assessments to identify potential hazards and ensure appropriate control measures are in place. These are accompanied by detailed method statements, outlining how tasks will be carried out safely and efficiently. You can rest assured that our entire installation team holds valid **CSCS (Construction Skills Certification Scheme)** cards.

This means every member is fully qualified, safety-aware, and compliant with industry standards when working on your site. We're committed to maintaining the highest levels of professionalism, health & safety, and quality on every project.

Finishing Touches...

At South West Upholstery, we pride ourselves on offering a seamless experience from start to finish. What sets us apart is the care and attention each piece receives, from design to delivery.

Our dedicated in-house delivery team and branded vehicles ensure your banquette seating arrives safely and efficiently. While many banquettes are built onsite, our precision CNC cutting and expert upholstery process allow us to pre-build your seating in our workshop. On delivery day we'll arrive ready to install, quickly positioning your seating, making any final adjustments (like kickplates), and leaving you with a fully fitted, luxurious result, with minimal disruption.

We operate across the entire UK, and our experienced team is on hand to **collect, deliver, and install**, ensuring every detail is taken care of.



Case Study – Flightline Kitchen & Bar

Flightline Kitchen & Bar, the newly revamped café at Aerospace Bristol, officially opened its doors in April 2025. Located inside one of the museum's Grade II listed aircraft hangars, the café offers a warm and immersive space inspired by Bristol's rich aerospace heritage.

Flightline Kitchen + Bar Lands at Aerospace Bristol

The name "Flightline" pays homage to the original factory canteen that once served the workers at Filton during the construction of legendary aircraft such as the Bristol Britannia and the Concorde both icons of British aviation history.

Design That Takes Off

South West Upholstery was proud to play a key role in bringing Flightline's unique interior vision to life. We were responsible for the bespoke design and production of all boxed cushions throughout the café, alongside the striking decorative seatbelt straps that echo the venue's aviation theme.

Working closely with the designer, we developed tailored cushion and seatbelt samples, ensuring the materials and details complemented the aircraft-inspired interior. Our skilled team helped realise this reimagined space, blending design creativity with expert craftsmanship to deliver an atmosphere that is both stylish and true to its heritage.

JS Mansfield – fit out and joinery experts – were also on the project looking after the manufacture of all the bespoke joinery, work also included large service counters clad in stainless steel.



Case Study – Cosy Club Reading

The design of the new Cosy Club in Reading was led by award-winning designer Cassie Nicholas and Lyzanne Smith from Loungers. Their creative vision brought a cinematic-inspired interior to the venue, blending 1970s and 1980s glamour with bespoke elements such as custom wallpapers, lighting, seating, and carpets.

Anna Hayman created bespoke prints for the venue, including custom-made designs for carpeting, upholstery, and wallpapers, all tailored to the Cosy Club's relaxed members' club aesthetic.

South West Upholstery was proud to be commissioned to deliver the bespoke furniture including the venue's show-stopping snake banquette seating. Our collaboration focused on developing distinctive, high-impact pieces that embody the signature character and charm of the Cosy Club brand. Working closely with the Loungers team, we brought together creativity, craftsmanship, and advanced technology to help bring their vision to life.

To ensure accuracy and creative alignment, we conducted a series of collaborative meetings where mood boards were presented to capture the desired approach. These visual concepts were then translated into precise technical designs using CAD software, providing a clear path from concept to creation.

We integrated cutting-edge technology, including 3D modelling and screen-to-machine software, to streamline the design and production process. This digital workflow ensured consistency, efficiency, and flawless execution at every stage.

To complete the project, custom wooden frames were crafted to our clients' specifications. Each frame was tailored to meet both the aesthetic and functional needs of the venue, ensuring a cohesive, premium finish across all furniture elements.

The result: furniture that not only complements the bold new interior of Cosy Club Reading but elevates the overall guest experience through comfort, quality, and visual impact.





Case Study – Hush Private Members Club

The recent unveiling of Hush, Warwickshire's newest private members' club, has captivated attention for its evocative 1920s elegance and immersive speakeasy atmosphere.

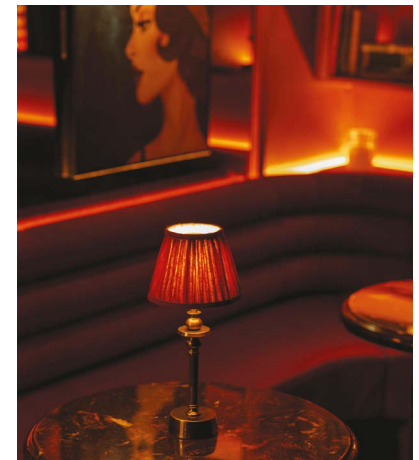
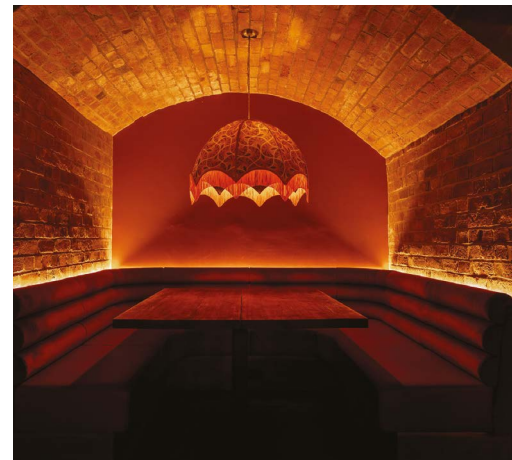
Designed by the acclaimed Black Ivy Design, every element of the space from the ambient lighting to the rich velvety texture has been curated to transport guests to a bygone era of glamour and sophistication. But beyond the overarching aesthetic, it's the execution of key design elements that truly brings this vision to life.

Among them, the banquette seating plays a starring role. Guests are invited to sink into plush, expertly crafted seating, forming the luxurious foundation of their experience at Hush. This is where South West Upholstery steps into the spotlight.

Known for our bespoke craftsmanship and attention to detail, we were proud to create the custom banquette seating now featured in Hush's opulent interior. Built with precision and care, each seat was tailored to complement the 1920s-inspired brief while offering durability suited to a high-end, high-traffic setting.

Our work not only reflects the visual language of the club but ensures lasting comfort and structural integrity. From the elegant stitch lines to the choice of premium materials, every detail is a testament to the craftsmanship and consistency that define South West Upholstery.

We're delighted to have played a part in bringing Hush's timeless atmosphere to life.







GET IN TOUCH

We'd love to hear from you, whether you have a quick question or a large-scale project in mind. No job is too big or too small. You can reach us by email, give us a call, or drop by our workshop & showroom to chat with a member of our friendly Sales Team.

Why not make a day of it and enjoy everything our vibrant city of Bristol has to offer while you're here?



Workshop (Appt only)
Units 7 & 8
Novers Hill Trading Estate
Bristol
BS3 5QY

CONTACT US FOR A FREE NO OBLIGATION QUOTE

0117 370 2745 | sales@swupholstery.co.uk | swupholstery.co.uk

  @swupholstery



For our full terms and conditions, please visit

www.swupholstery.co.uk/terms-and-conditions